

# DEFENDER® STEEL FRAMED GLASS FIRE DOORSETS [EI -/90/30]



## Description

Fully glazed fire door incorporating the RP Technik Hermetic 70 profile and Schott Pyranova glass. Single and double doorsets available with and without top/side lights.

## Applications

Residential complexes, hospitals, school's, car parks, shopping centres, computer rooms, offices & high rise apartments

## Features

- Slimline architectural steel framing
- Crystal clear views
- Fully certified to Australian Standards
- For use in multiple wall structures
- Low maintenance
- Durable design

## Model

**DEFENDER®9030-FRD**

## HOW TO SPECIFY

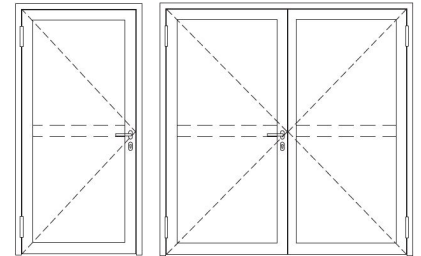
Fire doorset shall be Defender Glass Fire Door System comprising proprietary steel frame system and Schott Pyranova 23mm thick glass [DEFENDER®9030-FRD]. The entire system must be certified as having been tested/assessed to AS1530.4 and installed in accordance with AS1905.1. Installation must be carried out by an installer registered with and approved by the manufacturer. Australian Fire Control. Phone: [08] 9399 6957. Email: sales@australianfirecontrol.com.au

## Advantages of PYRANOVA®

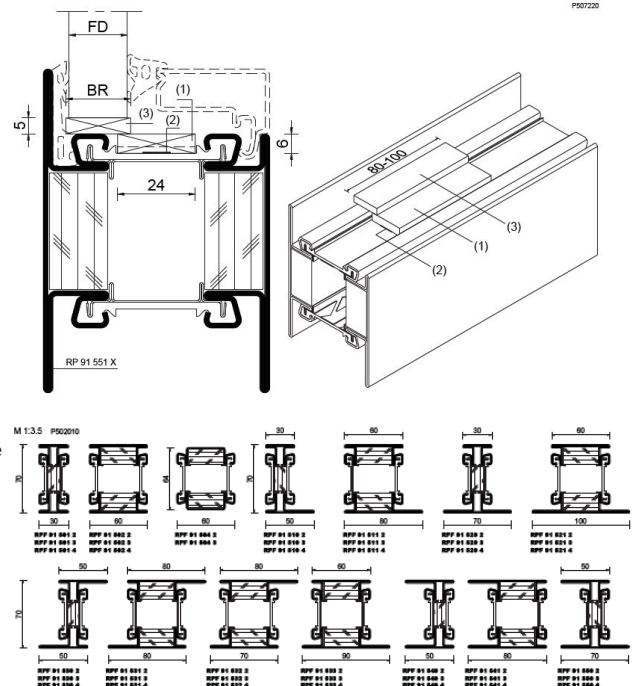
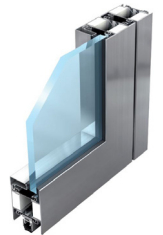
PYRANOVA® special glass is a clear, laminated composite glass that is made up of several thin panes of float glass. A transparent, fire resistant layer that intumesces up in the event of a fire has been placed between the panes. When used in fire resistant glazing, PYRANOVA® special glass prevents the passage of fire, smoke and heat radiation. Due to its structure, the standard construction of PYRANOVA® special glass is protected from either side.

PYRANOVA® special glass when used as a component in fire resistant glazing meets the requirements of fire resistance classes EI 15 to EI 120, or EW 30 to EW 60. This glass is not only very popular due to its attractive design, but also because it reliably protects escape routes in the event of a fire.

The protective shield that PYRANOVA® creates in the event of fire protects against the radiated heat. This ensures a safe escape route and makes PYRANOVA® ideal for use on escape routes and staircases.



**“THE VERSATILE  
CHAMPION IN FIRE  
PROTECTION”.**



rp  
technik



SCHOTT  
glass made of ideas

**Australian Fire Control Pty Ltd**

Phone: [08] 9399 6957

Address: 17 Williams Road Kelmscott WA 6111

Email: Sales@AustralianFireControl.com.au

www.australianfirecontrol.com.au