



SYSTEM OVERVIEW

SMOKE HALT

Smoke Curtain

W.A.'s Leading Passive Fire
Protection Company

Phone: 9399 6957
Email: Sales@AustralianFireControl.com.au
Address: 17 Williams Road Kelmscott WA 6111
Postal: PO BOX 1008 DC WA Kelmscott WA 6997
Web: www.australianfirecontrol.com.au

Defender
Smoke Curtain Series

General

The SmokeHalt Smoke Curtain has been fully tested in accordance with AS1530.4; AS1530.7 & BS 7346 Part 3.

The fabric is coiled up inside a galvanised sheet steel casing in one piece by means of patented bearings providing a continuous length. An integrated 24V motor allows for a smooth & even rolling up of the curtain. The descent of the curtain occurs by gravity [gravity fail safe] and includes self-instructed regulation of closing speed. Header boxes & bottom rails are powder coated galvanised steel.

In the event of power failure of the 230V supply the barrier closes or if:

- a) The signal to the Alarm Interface Panel from the main alarm is interrupted.
- b) The signal to the Emergency Power Unit is interrupted or severed.
- c) The power for the Emergency Power Unit to relays or the motor is interrupted.
- d) Any wiring is corrupted

The SmokeHalt Smoke Curtain has a 2 year manufacturer's warranty subject to service & maintenance conditions. Australian Fire Control Pty Ltd is a Perth based business and provides complete and local support for the life of these curtains.

Maximum permissible size

8000mm wide x 3000mm drop and 4000mm wide x 4000 mm drop.

System dimensions

Head box; 165 H x 163 W mm

D. Bearing type: Standard fixed end bearings

E. Side guide; 100 mm x 50mm

Bottom bar; 35mm wide (at the base) Triangular section, requiring a 50mm min. slot in the ceiling lining.

Fabric type

660g/m² stainless steel woven fabric, incorporating a coated glassfibre material to reduce radiant heat transmission.

Load requirements

Load requirements at head = 25kg/m of width

Load requirements at sides = 20kg/m of height

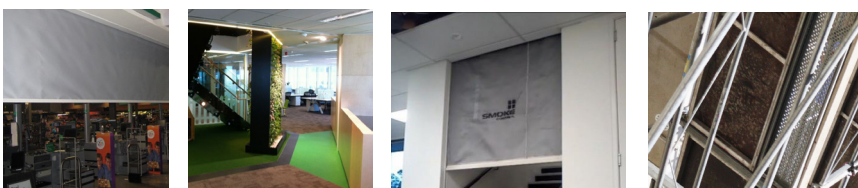
Mounting orientation

Installation Configuration: Housing attached directly to substrate above opening, face fixed to wall or suspended from slab above.

Signage on curtain (standard stencils)

1. Green running man (350 x 350mm)
2. Arrows (350 x 190mm high)
3. Fire Safety Curtain (150mm high x 1500mm long)
4. Push Button (100mm high)

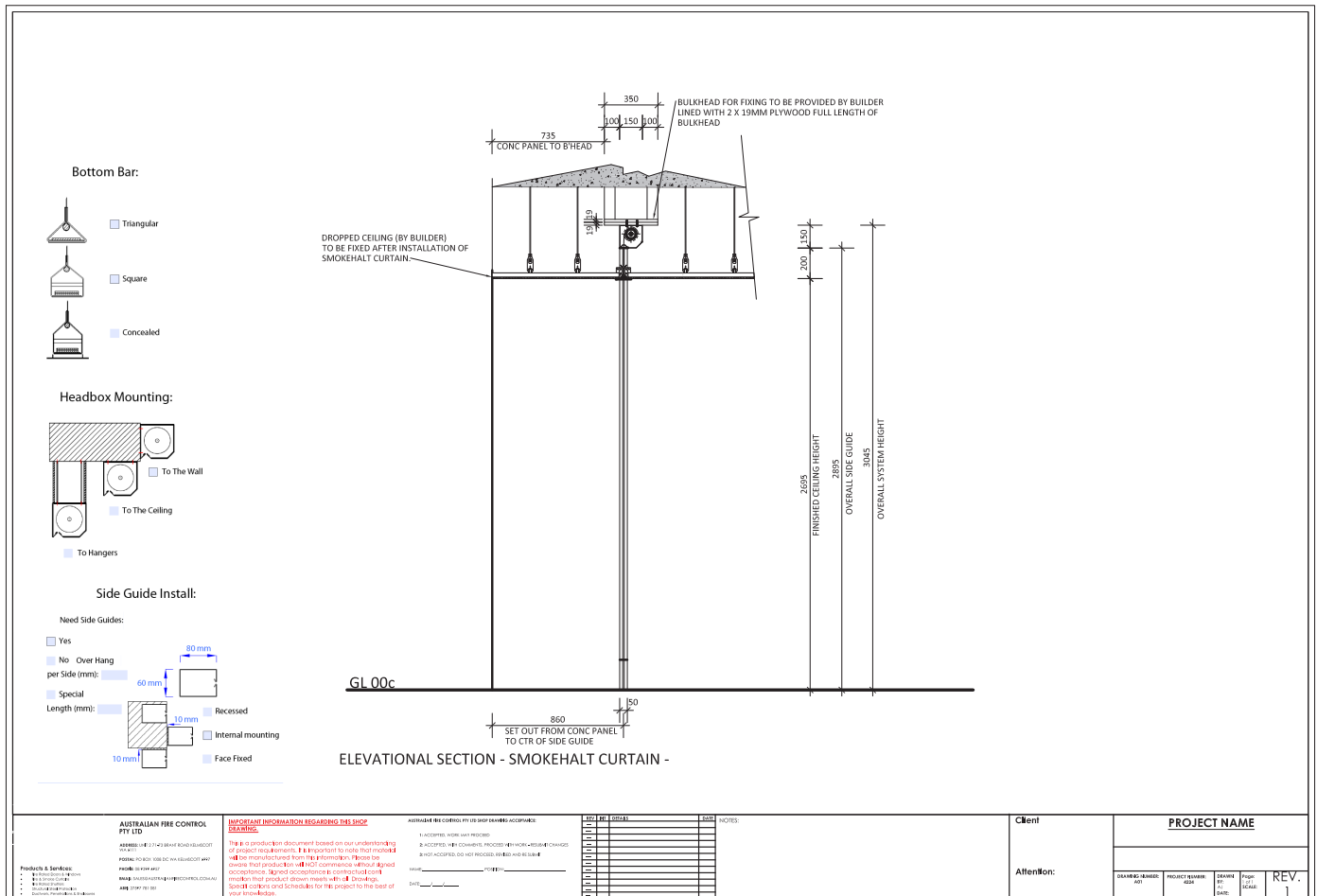
System: SMH158714-AFC



PERFORMANCE CRITERIA

1. Smoke Performance Level (FRL): D30
2. Smoke leakage: Not applicable
3. Group Number for fabric: 1 when tested in accordance with AS3837
4. Durability; light duty – tested to 30,000 maintenance free cycles
5. Maximum pressure; 25Pa
6. Maximum allowable gap to non-combustible sill 25mm
7. Combustible floor coverings permitted at threshold (conditions apply)
8. Closing time of 100 - 200mm/sec
9. Time delay to required (exhaust/pressurization) fan speed = 60 seconds (min) – 90 seconds (max). Time is dependent on drop height of curtain.
10. Time delay for rewind; ensure fan speed is zero + 20 seconds prior to reset of alarm signal from FIP enabling curtain rewind.
11. Fail safe close on loss of power and/or signal trip using battery backup.
12. Motor rewind automatically on re-set of power and alarm signal, no service call needed.
13. Battery backup for nuisance deploys (power failure only) (delete if not required)
14. Commissioning shall be conducted in conjunction with Mechanical services and detection/alarm system. Systems shall be balanced to work together without over pressurizing the fire curtain.
15. Maintenance shall be conducted quarterly by the Manufacturer and/or their nominated representative to the Manufacturers recommendations.

Sample Shop Drawing



The Smokehalt - V overhead coiling vertical Smoke curtain was designed and engineered in Australia. It is also made in Australia by a 100% owned and operated Australian company.

The Smokehalt -V vertical smoke curtain is a budget priced smoke curtain system designed to suit smaller openings of up to 8m wide without overlaps depending on the drop height required.

- Available with and without side guides.
 - No additional import duties and freight charges.
 - Highly reliable, tested to 30,000 maintenance free cycles
 - High quality Australian designed controllers.
- Tested in accordance with EN12101.1 and BS7346.3 Smokehalt is available with various performance levels from D30 through to DH120

KEY FEATURES



Attractive

SmokeHalt Systems are slimline utilizing an **attractive powder coated headbox and sideguides**, producing a high level finish



Design Flexibility

Designed to suit opening up to 8 METERS wide WITHOUT overlaps depending on the drop height required.



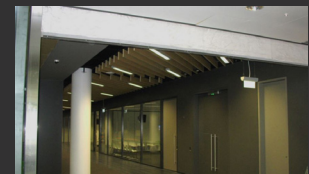
Quality

Designed, Manufactured and engineered in Australia. Highly reliable, tested to 30,000 maintenance free cycles

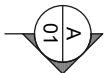


Peace Of Mind

Being fully tested to AS1530.4 & BS 7346 Part 3.



CURTAIN CONTROLLER:
SCS2034 SERIES TRIGGER UNIT
REQS: 240V 10A 80 & 0 VOLT NORMALLY
CLOSED BRT CONTACT TO PIP TO BE PROVIDED
BY OTHERS
DIMS: APPROX. 250x250x100
MUST BE LOCATED NO FURTHER THAN 1m
AWAY FROM MOTOR



SYSTEM WIDTH

BETWEEN SIDE GUIDE (SYSTEM - 200)

100 100

U/S SLAB

FCL

FR BULKHEAD
165

SYSTEM HEIGHT
CURTAIN DROP (SYSTEM - 165)



FRL

**FRONT ELEVATION
TYPICAL**

1
SCALE 1:20 @ A2

**SIDE ELEVATION
SECTION**

A
SCALE 1:20 @ A2

FRL -120/120 BULKHEAD
BY OTHERS
DOW#: SCS-FH-TEMP-05

450x450 NOMINAL ACCESS PANEL, SUPPLIED
& INSTALLED BY OTHERS.
MAY BE REQD. ON BOTH SIDES OF CURTAIN

450x450 NOMINAL ACCESS PANEL, SUPPLIED &
INSTALLED BY OTHERS.
MAY BE REQD. ON BOTH SIDES OF CURTAIN

**PLAN
SECTION**

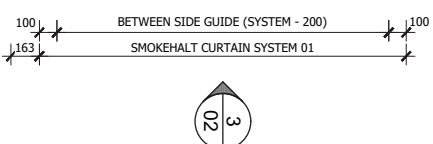
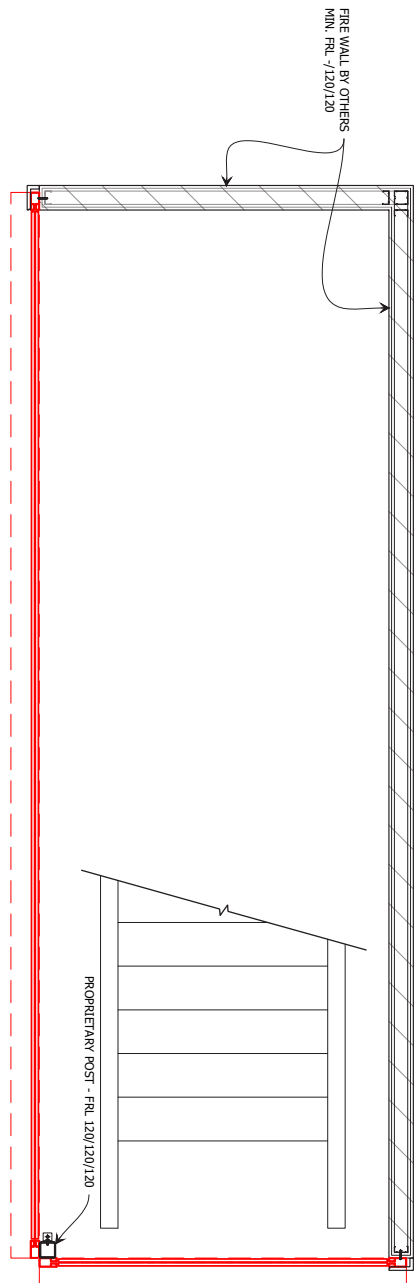
B
SCALE 1:20 @ A2

CHK	REASON	DATE
A BK	FOR INFORMATION	15/07/2016

**INFORMATION
COPY ONLY**

built for fire
Address: 17 Williams Road/Keinscott WA 6111
Phone: 08 939 6957
Email: sales@AustralianFireControl.com.au
Web: www.AustralianFireControl.com.au

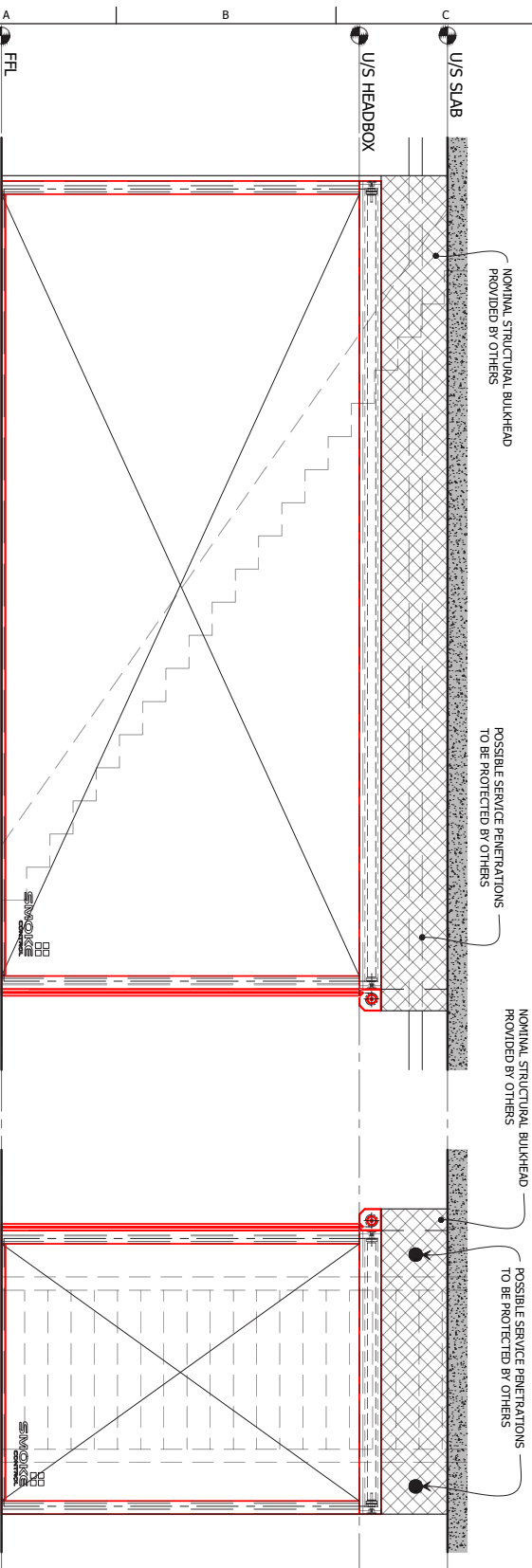
CLIENT FOR INFORMATION ONLY	
TITLE TYPICAL SHOP DRAWING	
SUB SET (CATEGORY) ARCHITECTURAL	
DRAWING NUMBER SCS-FH-TEMP-01	
DRAWN BY ISSUE STATUS: INFORMATION	
START DATE 04/11/2015	SCALE 1:20 @A2



100
BETWEEN SIDE GUIDE (SYSTEM - 200)
SMOKEHALT CURTAIN SYSTEM 01
100
163

1
FLOOR PLAN
SMOKEHALT EXAMPLE CONFIGURATION
SCALE 1:20 @ A2

2
02



2
ELEVATION
CURTAIN 01 - FRONT VIEW
SCALE 1:25 @ A2

3
ELEVATION
CURTAIN 02 - FRONT VIEW
SCALE 1:25 @ A2

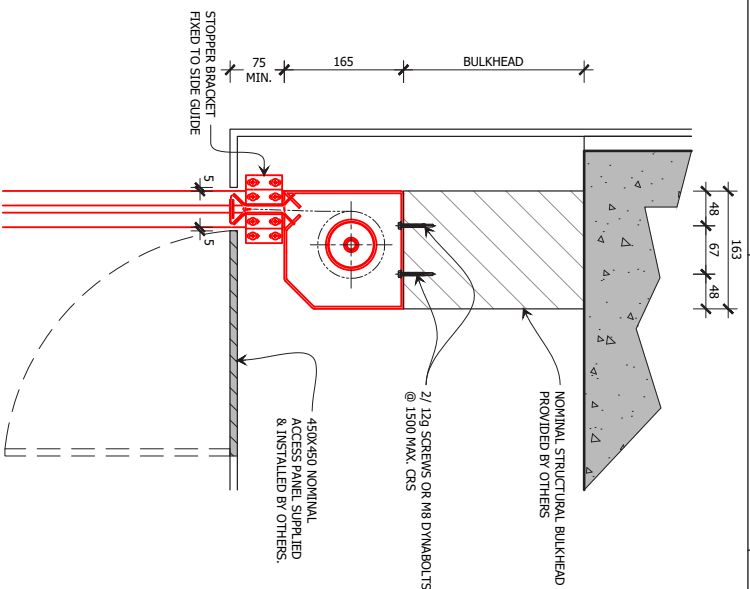
CHK	REASON	DATE
A BK	FOR INFORMATION	04/11/2015

built for fire
Address: 17 Williams Road Kelmscott WA 6111
Phone: 08 9399 6957
Email: Sales@AustralianFireControl.com.au
Web: www.AustralianFireControl.com.au

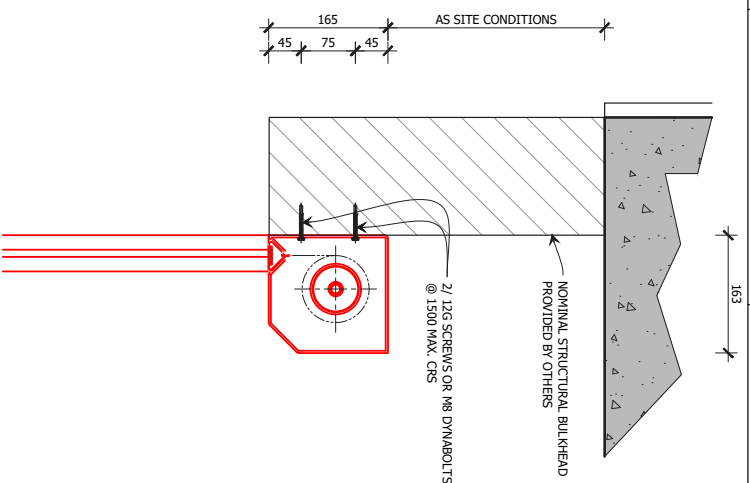
PROJECT	
CLIENT	
TITLE	
SUB SET (CATEGORY)	
ARCHITECTURAL	
DRAWING NUMBER	
SCS-FH-TEMP-02	
DRAWN BY	
ISSUE STATUS	
INFORMATION	
START DATE	
SCALE	
1:20, 1:25	@A2

<<< 594mm

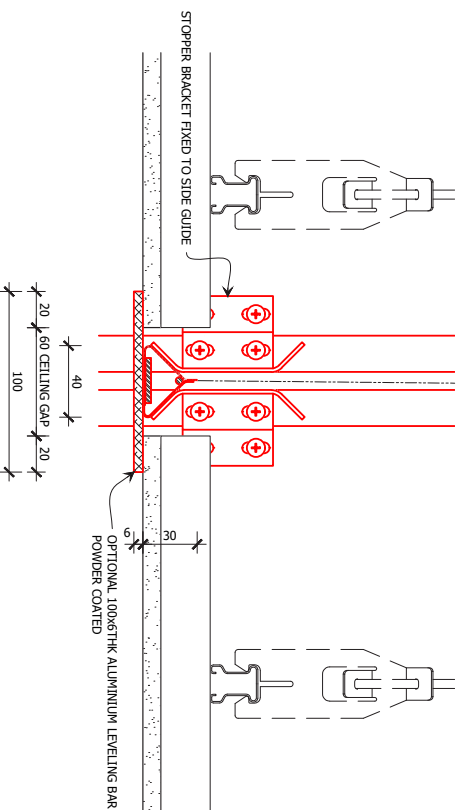
FILE: SCS-FH-TEMP.dwg --- PLOTTED ON 15/07/2016 BY IGOR REBENKO



1
ELEVATION
SOFFIT FIXING DETAIL
SCALE 1:5 @ A2



2
ELEVATION
FACE FIXING DETAIL
SCALE 1:5 @ A2



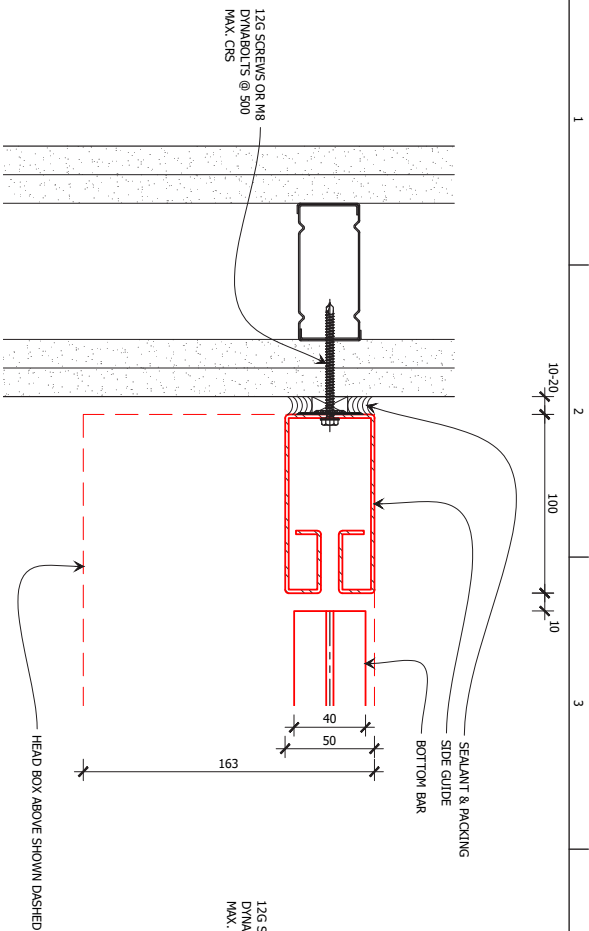
3
ELEVATION
OPTIONAL LEVELING BOTTOM BAR
SCALE 1:2 @ A2

CHK	REASON	DATE
A	FOR INFORMATION	04/12/2015

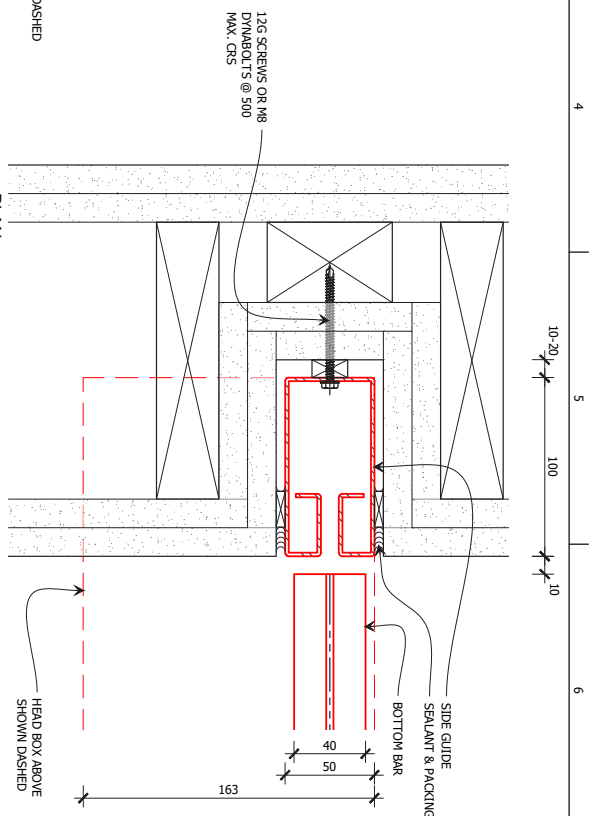
**INFORMATION
COPY ONLY**

built for fire
Address: 17 Williams Road Kalamit WA 6111
Phone: 08 9399 6957
Email: Sales@AustralianFireControl.com.au
Web: www.AustralianFireControl.com.au

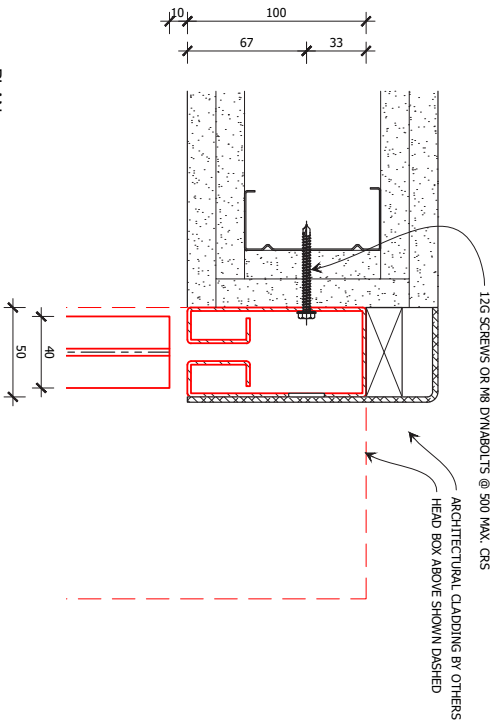
PROJECT	
CLIENT	
FOR INFORMATION ONLY	
TITLE	
SUB SET (CATEGORY)	ARCHITECTURAL
DRAWING NUMBER	SCS-FH-TEMP-03
DRAWN BY	ISSUE STATUS
START DATE	04/11/2015
SCALE	1:5, 1:2 @A2



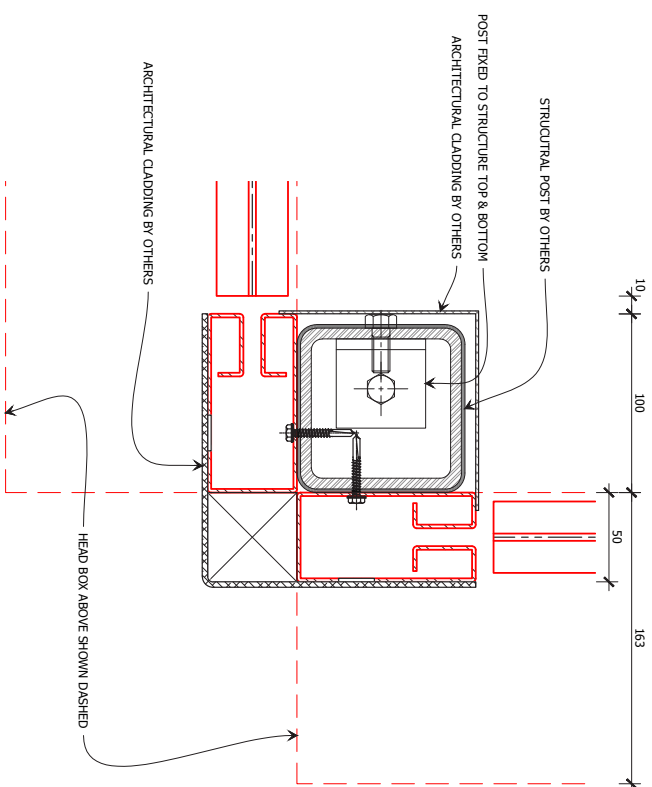
1
PLAN
TOE FIXED SIDE GUIDE
SCALE 1:2 @ A2



2
PLAN
REBATED SIDE GUIDE
SCALE 1:2 @ A2



3
PLAN
FACE FIXED SIDE GUIDE
SCALE 1:2 @ A2



4
PLAN
90° POST DETAIL
SCALE 1:2 @ A2

CHK	REASON	DATE
A	FOR INFORMATION	04/11/2015

**INFORMATION
COPY ONLY**

A fire C
built for fire
Address: 17 Williams Road Keimscott WA 6111
Phone 08 9399 6957
Email: Sales@AustralianFireControl.com.au
Web: www.AustralianFireControl.com.au

PROJECT	SCS-FH-TEMP-04
CLIENT	ARCHITECTURAL
TITLE	SCS-FH-TEMP-04
SUB SET (CATEGORY)	ARCHITECTURAL
DRAWN BY	ISSUE STATUS:
START DATE	04/11/2015
SCALE	1:2
	@A2



TRUST IN US

W.A's Leading Passive Fire Protection Company Senior management of Australian Fire Control [AFC] have been involved in the WA construction industry since 1979.

Australian Fire Control fire rated glass doors open up the world of imagination to Architects to create visually appealing buildings and not compromise a view or space and achieve the required fire rating.

Full product range including:
Hinged & Sliding Fire Doors
Hinged & Screw Fixed Access Panels
Fire Rated Glazing 'E' to 'EI'. Windows
Fire & Smoke Curtains
Fire Shutters
Steel Protection: Spray/Board/Thin Film
'Passive' Fire Systems: Penetrations/Ducts/Enclosures
Compartmentation Barriers
Cable Coating
BAL 40 & FZ Systems
Specialised Doors: Acoustic/ X-ray/Impact/Steel/Security



Design | Manufacture | Supply | Install | Certify | Maintain

CONTACT AUSTRALIAN FIRE CONTROL

Phone

08 9399 6957

Email

Sales@AustralianFireControl.com.au

Head Office

17 Williams Road Kelmscott WA 6111

Postal

PO BOX 1008 DC Kelmscott WA 6997

Web

www.AustralianFireControl.com.au